



# Collagen Type III rabbit mAb(ABT192R)

|                           |  |
|---------------------------|--|
| <b>Catalog No</b>         | YP-Ab-15508  |
| <b>Isotype</b>            | IgG  |
| <b>Reactivity</b>         | Human  |
| <b>Applications</b>       | IHC;IF   |
| <b>Gene Name</b>          | COL3A1   |
| <b>Protein Name</b>       | Collagen Type III  |
| <b>Immunogen</b>          | Synthesized peptide derived from human Collagen Type III   |
| <b>Specificity</b>        | This antibody detects endogenous levels of Collagen Type III at Human  |
| <b>Formulation</b>        | Liquid in PBS containing 50% glycerol, 0.5% BSA and 0.02% sodium azide.  |
| <b>Source</b>             | Polyclonal, Rabbit,IgG   |
| <b>Purification</b>       | The antibody was affinity-purified from Cell supernatant by affinity-chromatography using specific immunogen.  |
| <b>Dilution</b>           | IHC-p 1:50. IF 1:50-200  |
| <b>Concentration</b>      | 1 mg/ml  |
| <b>Purity</b>             | ≥90%   |
| <b>Storage Stability</b>  | -20°C/1 year   |
| <b>Synonyms</b>           | Collagen alpha-1(III) chain  |
| <b>Observed Band</b>      |  |
| <b>Cell Pathway</b>       | Secreted, extracellular space, extracellular matrix .  |
| <b>Tissue Specificity</b> | Colon carcinoma,Liver,Placenta,Skin fibroblast,  |
| <b>Function</b>           | disease:Defects in COL3A1 are a cause of Ehlers-Danlos syndrome type 3 (EDS3) [MIM:130020]; also known as benign hypermobility syndrome. EDS is a connective tissue disorder characterized by hyperextensible skin, atrophic cutaneous scars due to tissue fragility and joint hyperlaxity. EDS3 is a form of Ehlers-Danlos syndrome characterized by marked joint hyperextensibility without skeletal deformity.,disease:Defects in COL3A1 are a cause of susceptibility to aortic aneurysm abdominal (AAA) [MIM:100070]. AAA is a common multifactorial disorder characterized by permanent dilation of the abdominal aorta, usually due to degenerative changes in the aortic wall. Histologically, AAA is characterized by signs of chronic inflammation, destructive remodeling of the extracellular matrix, and depletion of vascular smooth muscle cells.,disease:Defects in COL3A1 are the cause of Ehlers-Danlos syndrome t |
| <b>Background</b>         |  |

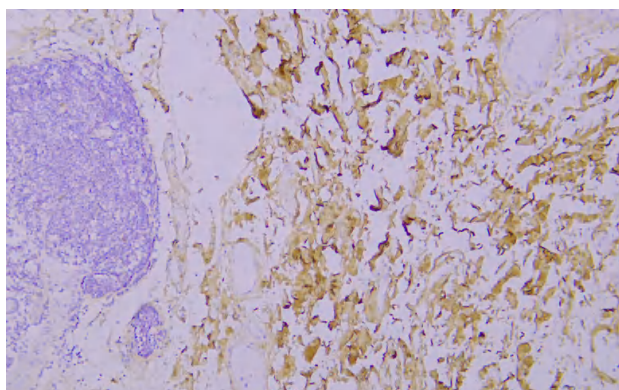
**matters needing attention**

Avoid repeated freezing and thawing!

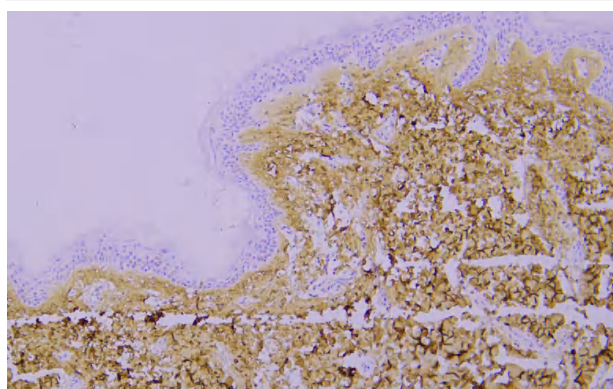
**Usage suggestions**

This product can be used in immunological reaction related experiments. For more information, please consult technical personnel.

## Products Images



Immunohistochemical analysis of paraffin-embedded human Colon. 1, Antibody was incubated at 4° overnight. 2, Citrate buffer of pH6.0 was used for antigen retrieval. 3,Secondary antibody was diluted at 1:200(room temperature, 30min).



Immunohistochemical analysis of paraffin-embedded human Skin. 1, Antibody was incubated at 4° overnight. 2, Citrate buffer of pH6.0 was used for antigen retrieval. 3,Secondary antibody was diluted at 1:200(room temperature, 30min).